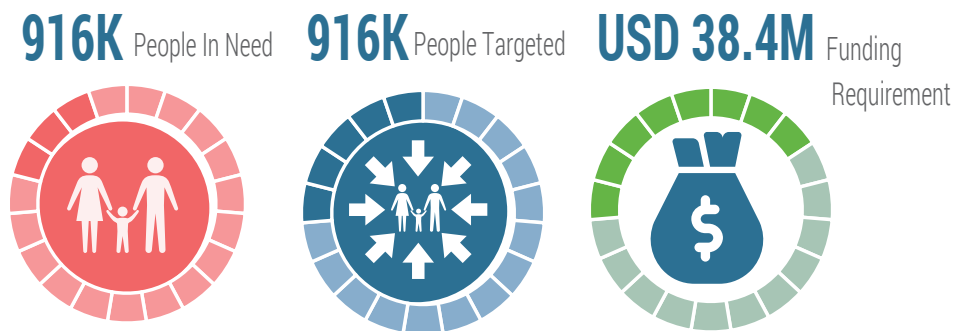


Overview

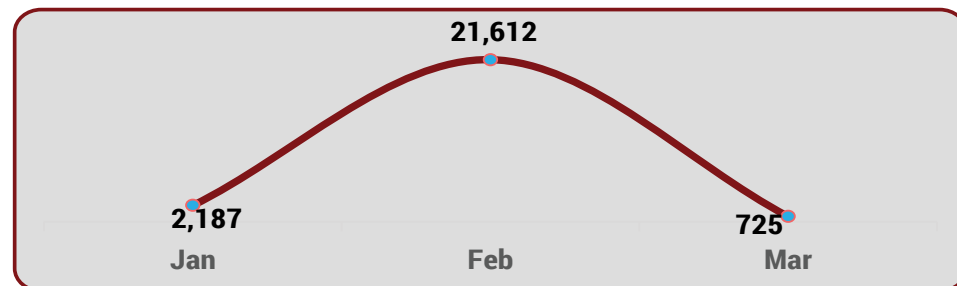
The ESNFI Cluster is working to provide alternative shelter options for IDPs who are currently occupying schools in the Northwestern, central, and eastern zones of Tigray. The Cluster is offering Cash-for-Rent and shelter construction support to facilitate the relocation process. However, some obstacles are hampering the plan, such as the lack of available land, the reluctance of IDPs to leave the schools due to fears of losing food assistance or their collective voice, and the ongoing displacement caused by drought and border tensions in the Northwest of the region.

Despite these challenges, in the first quarter of 2024 the Cluster has managed to reach **25K (3%)** of the targeted population with shelter and non-food items (NFI) and plans to reach another **88K (10%)** will be reached; However, this leaves a significant gap of **804K (87%)** of the people in need of ESNFI assistance in Tigray.

Key Figures



Response Progress as of March 2024



The response in March is down by almost **97%** compared to February. This is due to the challenges faced by the partners in relocating the internally displaced persons (IDPs) from schools to other sites. This relocation process is necessary to avoid disrupting the education sector and to provide better living conditions for the IDPs. The relocation process is expected to improve in the coming months as more sites are identified and prepared and shelter options are identified through the sub-national ICCG and OCHA Tigray.

Response by Demographics



Implementing Partners

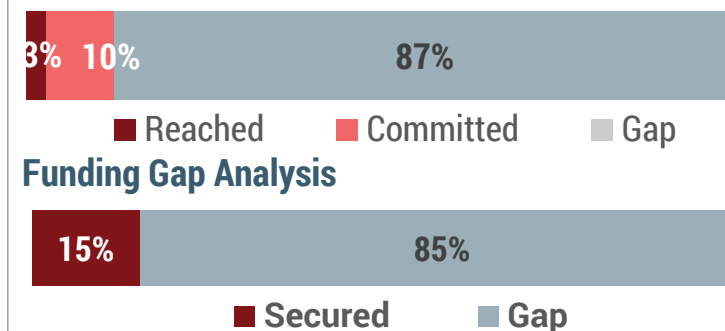


The boundaries and names shown and the designations used on this map do not imply official endorsement or acceptance by the United Nations



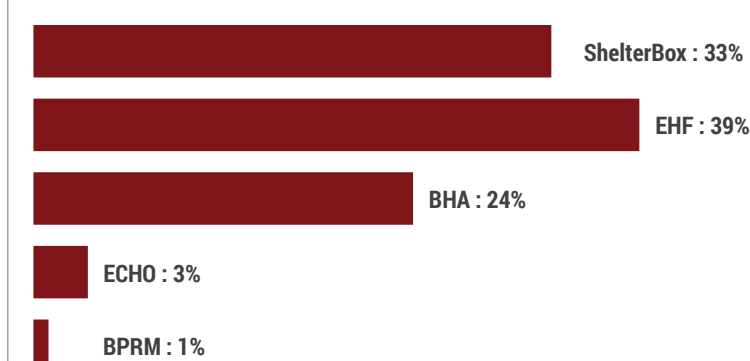
Photo Credit – ESBFI Cluster: IDP in SchoolHouse, Endabaguna, Tigray

Response and Funding Gap Analysis

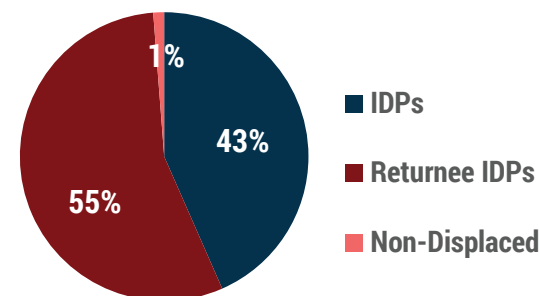


Note: Secured fund includes funds in Stock and implemented

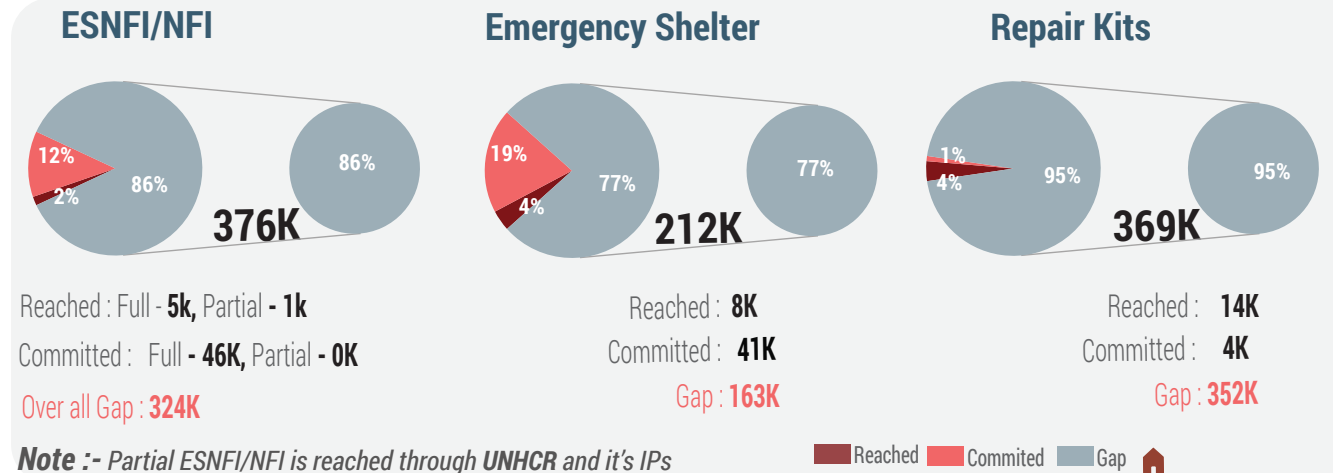
Top Contributing Donors



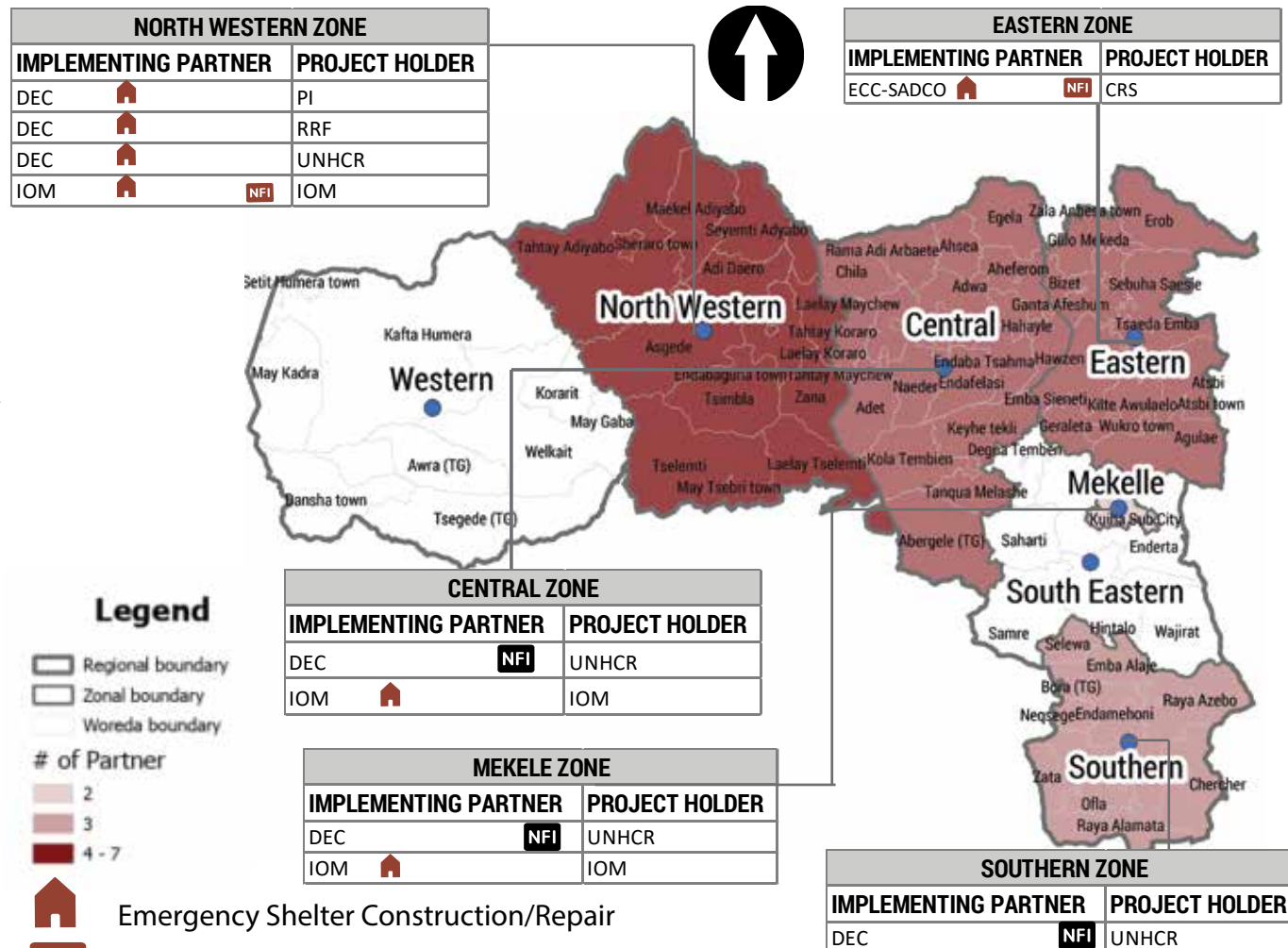
Response by Population Group



Response By Activity



Partners Operational Presence by Zone



Goographical coverage of the Response

No of Active Zones : **5**
No of Active Woredas : **16**

Active number of partners by Type

National NGO: **2**
International NGO: **0**
UN Agency: **2**

Donors



Created Date: 09 April 2024

Sources: ESNFI 5Ws

Feedback : im.shelternfi.ethiopia@gmail.com