

# **COMPARISON OF SATELITE IMAGERY**

## **KISMAAYO**

### **12/2012 – 10/2016**



"Copyright: DigitalGlobe, Inc. Source: US Department of State, Humanitarian Information Unit, NextView License" "Produced by UNITAR-UNOSAT".



**Shelter Cluster Somalia**  
ShelterCluster.org  
Coordinating Humanitarian Shelter

**2012 DEC**



★ **NEW BUILDINGS**



**2016 OCT**





"Copyright: DigitalGlobe, Inc. Source: US Department of State, Humanitarian Information Unit, NextView License" "Produced by UNITAR-UNOSAT".



**Shelter Cluster Somalia**  
ShelterCluster.org  
Coordinating Humanitarian Shelter



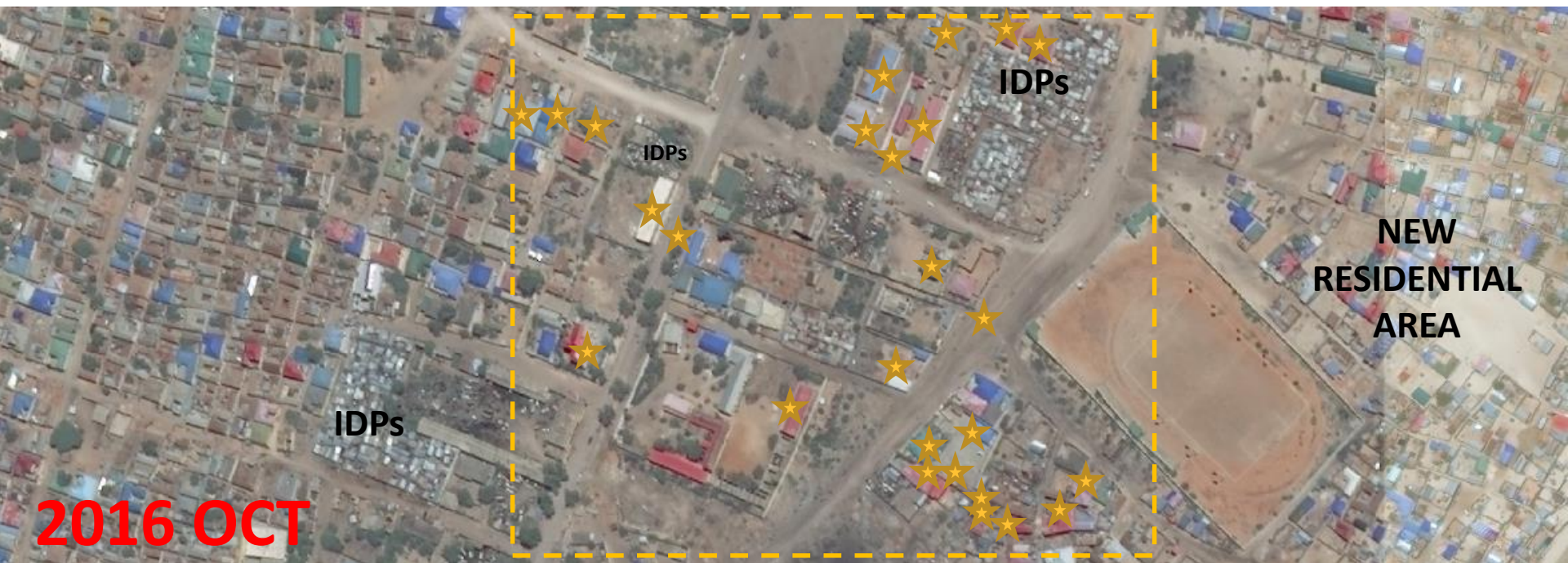
**2012 DEC**



**Limitation study zone**

★ **NEW BUILDINGS**

**2016 OCT**







"Copyright: DigitalGlobe, Inc. Source: US Department of State, Humanitarian Information Unit, NextView License" "Produced by UNITAR-UNOSAT".



**Shelter Cluster Somalia**  
ShelterCluster.org  
Coordinating Humanitarian Shelter



**2012 DEC**



**NEW  
RESIDENTIAL  
AREA**

**2016 OCT**





**2012 DEC**



**EXPANSION  
TOWN**

**2016 OCT**







"Copyright: DigitalGlobe, Inc. Source: US Department of State, Humanitarian Information Unit, NextView License" "Produced by UNITAR-UNOSAT".



**Shelter Cluster Somalia**  
ShelterCluster.org  
Coordinating Humanitarian Shelter



**2012 DEC**



**2016 OCT**





"Copyright: DigitalGlobe, Inc. Source: US Department of State, Humanitarian Information Unit, NextView License" "Produced by UNITAR-UNOSAT".



**Shelter Cluster Somalia**  
ShelterCluster.org  
Coordinating Humanitarian Shelter



**2012 DEC**



**UN-CONTROLLED URBAN EXPANSION:  
a path becoming a main road.**

**2016 OCT**

