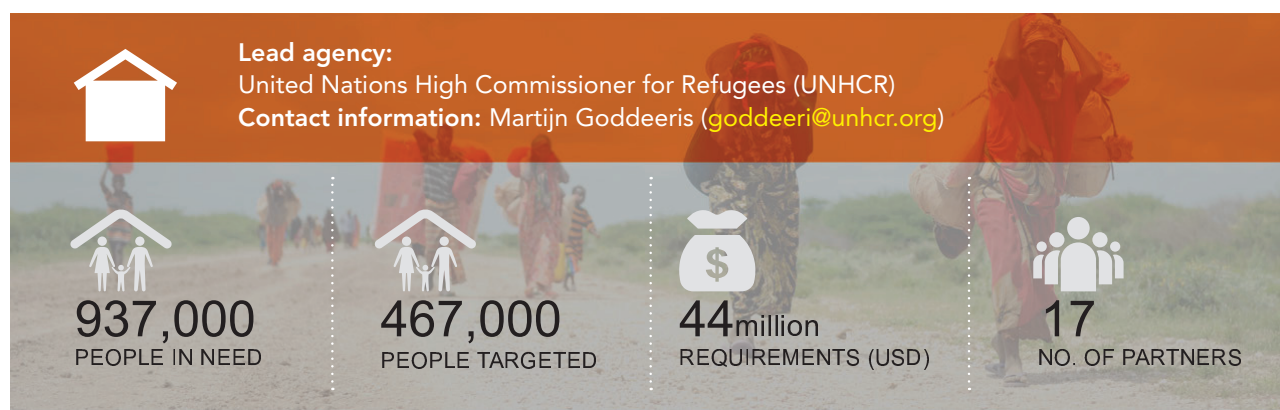


## SHELTER AND NON-FOOD ITEMS



### Priority activities

1. Provide displaced people with emergency assistance packages.
2. Provide protractedly displaced people with relevant shelter and non-food items.
3. Produce safe settlement plans to mitigate the risks of fire and outbreaks.

### Contributions to strategic objectives

Strategic Objective (SO)	Cluster objective (CO)	Key cluster indicators
SO 1 and SO 2	Contribute to the protection of -displaced people, including those affected by natural hazards, through provision of NFIs and emergency shelter.	Number of displaced people assisted with NFIs and emergency shelter Baseline: 265,000 <sup>14</sup> Target: 252,000
SO 3	Improve the shelter conditions of the protractedly internally displaced people.	Number of protractedly displaced people assisted with safe and habitable shelter with improved land tenure Baseline: 965,000 <sup>15</sup> Target: 215,000  Number of protractedly displaced households that have received NFIs through direct distribution, vouchers or cash mechanisms Baseline: 965,000 Target: 182,900

The cluster will continue putting adequate mechanisms in place to ensure timely delivery of emergency assistance. Transitional shelter solutions that are relevant to the displacement situation, and which take into account prevailing tenure considerations, will be provided. In Puntland, Somaliland and certain regions in southern and central Somalia (Baidoa, Doolow, Kismayo) where the authorities continue to demonstrate the desire to address the situation of displaced people by providing land tenure, the cluster in cooperation with the Protection Cluster will continue to advocate for more secure forms of tenure and will work with the authorities towards durable solutions for displaced people. The cluster will continue to map out the basic services of all settlements for internally displaced people in Somalia to ensure a base-line for improved targeting purposes.

<sup>14</sup> Based on the aggregate figures of overall displacement in 2014 due to military operations, inter-clan conflict, drought, flood and evictions, the cluster estimates that 265,000 people will need emergency shelter and non-food items in 2015.

<sup>15</sup> The baseline is the number of people in need of safe and habitable shelter with improved land tenure.

## 2015 SHELTER AND NFIS NEEDS AND PLANNED RESPONSE

