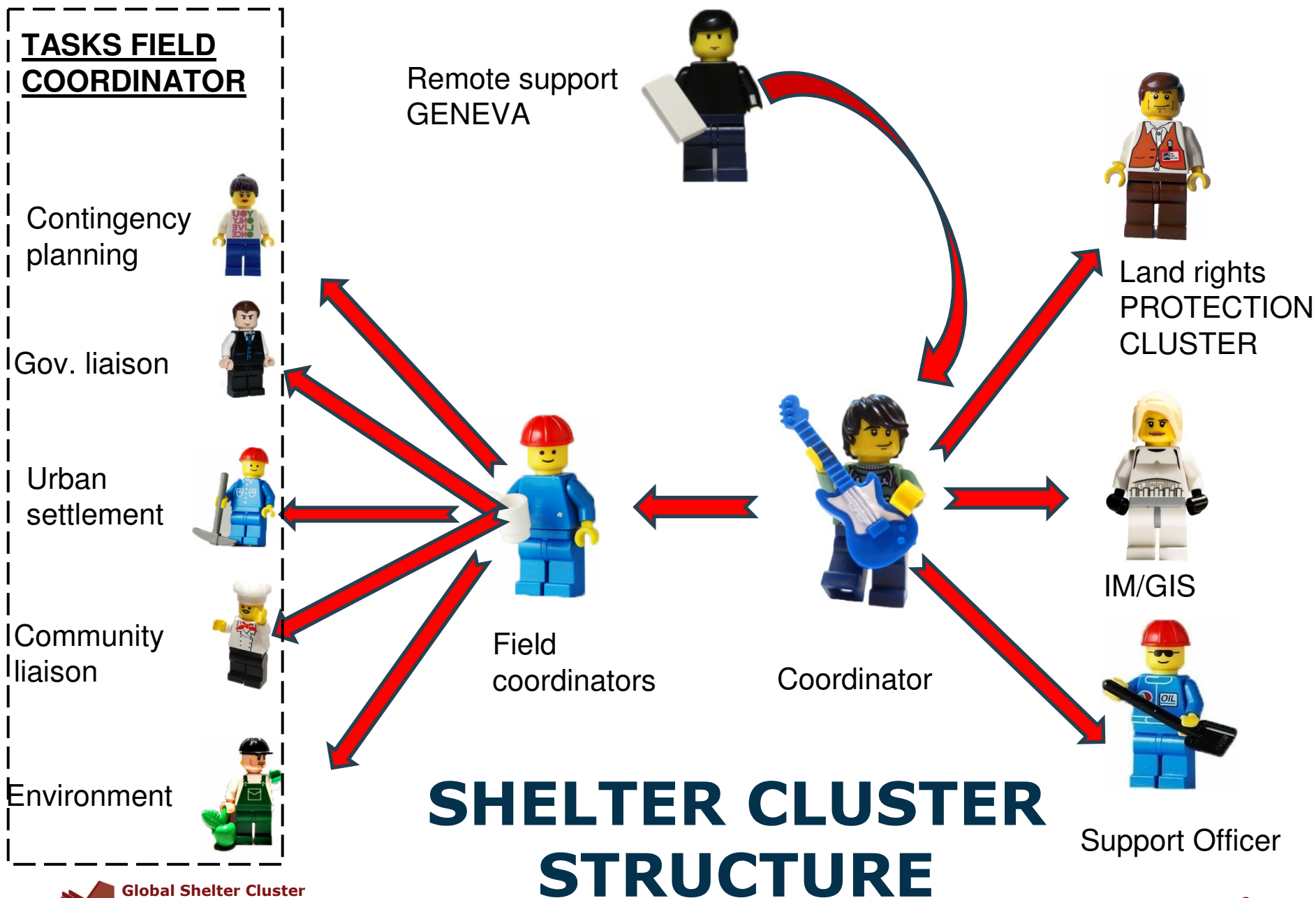


MAIN PRODUCTS THE SHELTER CLUSTER IN SOMALIA WOULD BE ABLE TO PRODUCE THROUGH IMPROVED COMMITMENT FROM BOTH LEAD AGENCY AND SHELTER CLUSTER MEMBERS




strategic framework, evaluations and RESPONSE PLANS

EXAMPLE PHILIPINES EVALUATION

 **Typhoon Pablo 2012**
ShelterCluster.org
Coordinating Humanitarian Shelter


**SHELTER SECTOR PROGRESS ASSESSMENT
IN MINDANAO, PHILIPPINES**

**SHELTER CLUSTER REPORT
FINAL ASSESSMENT REPORT
MARCH 2013**










A product of
REACH Improving
response effectiveness
through evidence based action

EXAMPLE PHILIPINES RESPONSE PLANS

 **Cluster Abri
Mali**

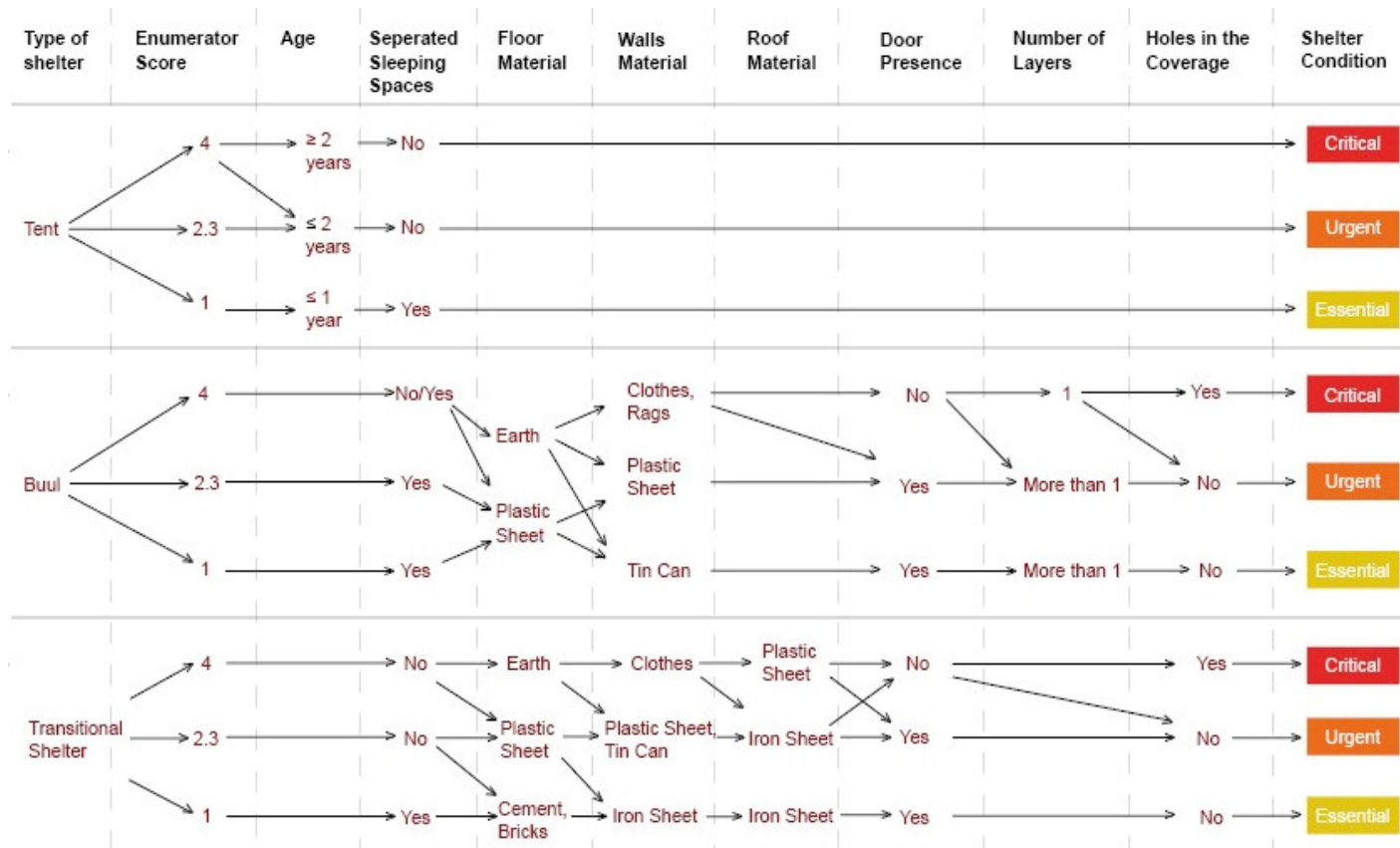
Plan de reponse – Cluster Abri - Scénarios possibles et types de reponses, Mali. (draft preliminaire)
Scénarios préliminaires en attendant les résultats des informations et des études en cours des membres du cluster abri.

		PLAN DE CONTINGENCE						
		INTERVENTIONS EN COURS ET PLANIFIEES					RETOURS	
Contexte		URBAIN			RURAL		CAMPS DE TRANSIT (A EVITER)*	
		Famille d'accueil	Locations	Centres collectifs	Famille d'accueil	Village d'accueil	Camps de fortune	
Type de reponse								
		Planifies						
		<ul style="list-style-type: none"> • Recensement des capacités d'accueil • Planification des sites • Non vivres • Cash** • Suivi du marche de la location • Reparations/ amélioration des habitats • Construction / amélioration des habitats • Non vivres • Cash** • Construction / amélioration des habitats • Planification des sites • Non vivres • Construction 						<ul style="list-style-type: none"> • Non vivres ("kits de retour") • Reconstruction • Problemes fonciers?
		<ul style="list-style-type: none"> • Appui multisectoriel livelihoods / AGR / Genre et resilience • Soutiens et coordination avec les structures locale (Protection Civile, Ministère du logement, CR Malien, Autorités locales...) et les autres clusters (en particulier WASH, Log...) 						

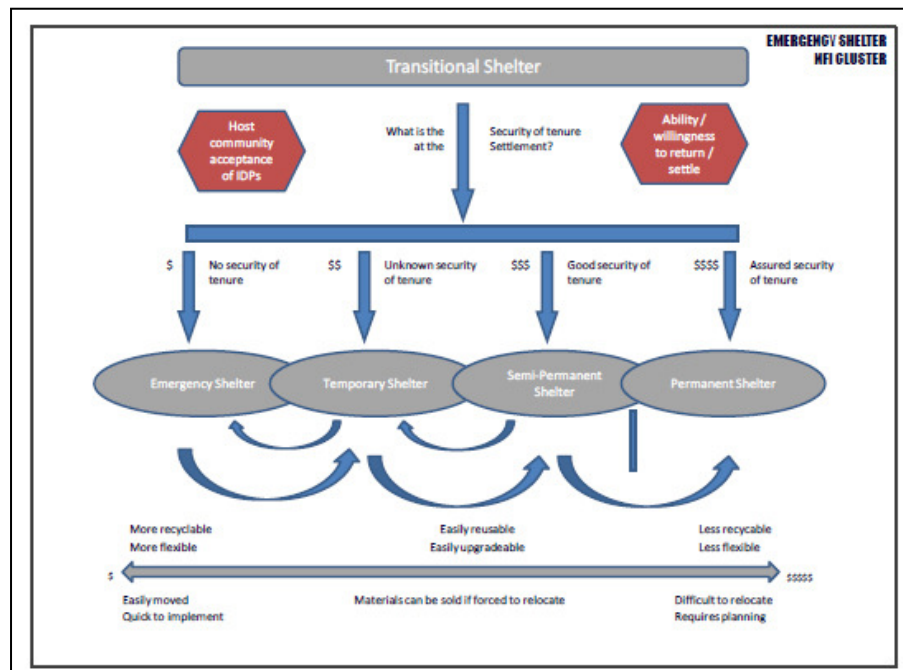
*A prévoir sous reserve. A Mopti des études d'identification de sites d'accueil ont été initiées.
**Cash pour la location et pour l'achat d'articles menages

Images adapted from: Shelter After Disaster, Shelter Centre / OCHA, 2010

TARGETING TOOLS and DECISION MAKING TREES

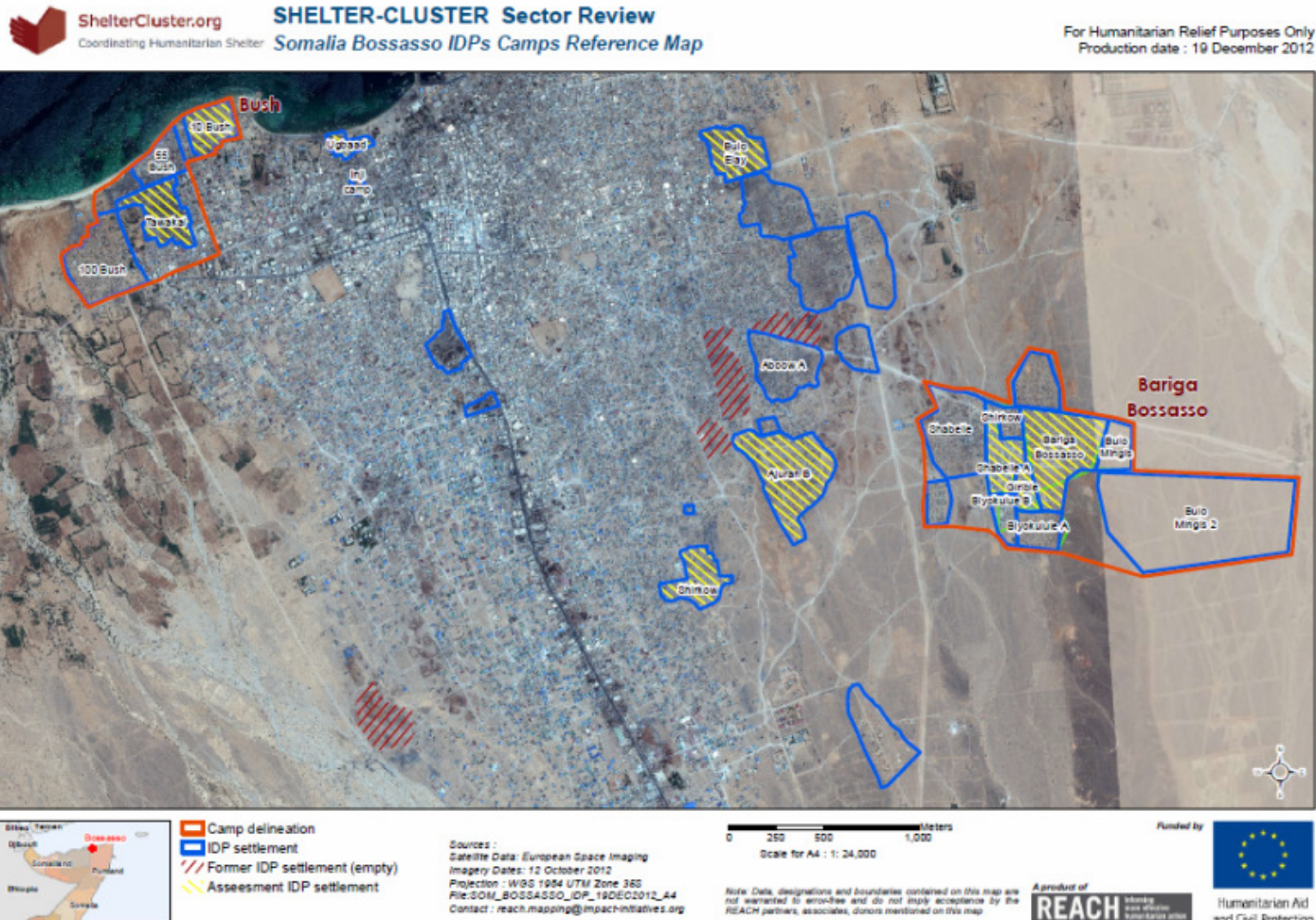


Accountability through agreed, transparent processes and clear technical guidelines



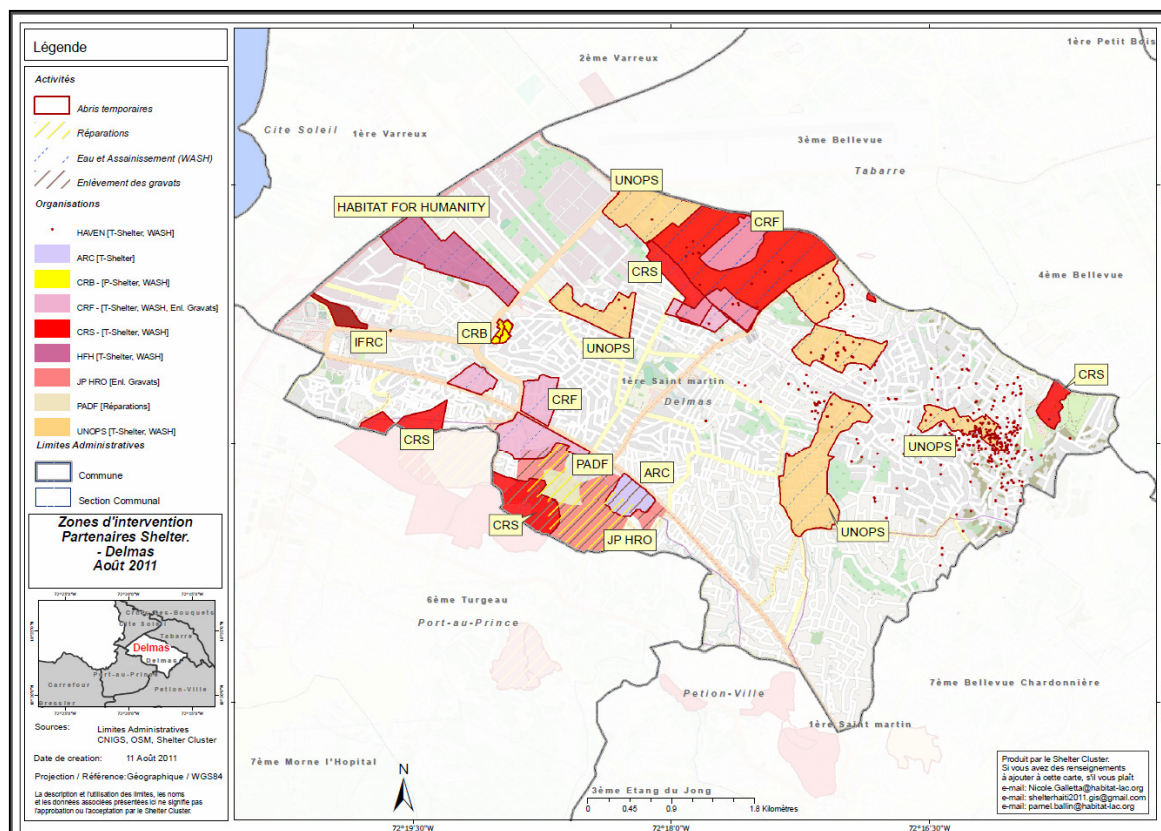
EMERGENCY SHELTER NFI CLUSTER				
Item category	Description	Unit of measure	QTY	Specification
1. Plastic sheet	Reinforced plastic Tarpaulins	4m x 5m	1	Core material is woven fabric - high density polyethylene (HDPE) laminated in white with LDPE. Provided with reinforced eyelets on edges
2. Blanket	Woven dry raised blanket	150 x 200 cm	3	Woven, low thermal resistance blanket, dry raised. Min 30% wool virgin or reconditioned - 1.5 Kg / blanket Note that UNHCR procure fleece blankets as part of their global framework agreement - see their catalogue for spec.
3. Sleeping mat	Synthetic sleeping mats	0.9m x 1.8m	3	Waterproof, tear proof and material trim-finished - 0.500 Kg / SQM Minimum which means that at this size, total weight is 2.43 Kg
24 Feb 2012				

Baseline assessments and mapping REACH

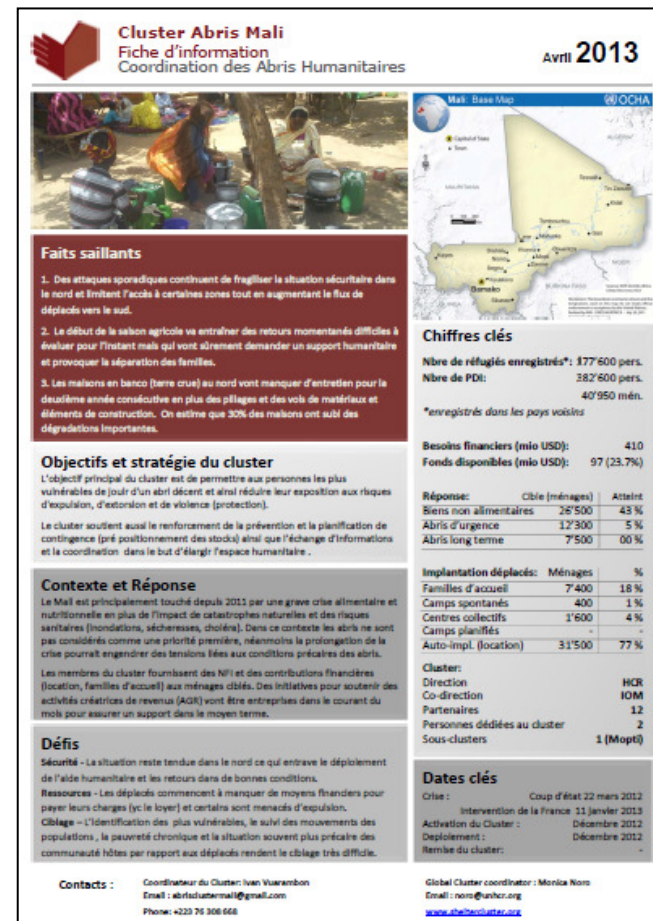


3W, FACTSHEET and DASHBOARD

EXAMPLE HAITI




MONTHLY FACT SHEETS AND DASHBOARD



Mapping of settlements





Typhoon Pablo 2012
 ShelterCluster.org
 Coordinating Humanitarian Shelter

Home > Asia/Pacific > Philippines > Typhoon Pablo 2012

Home	About us	Global	Africa	Americas	Asia/Pacific	Europe	MENA	References
------	----------	--------	--------	----------	--------------	--------	------	------------

Typhoon Pablo 2012
 Cluster Strategy
 All Documents
 Situation Reports
 Meeting Minutes
 Resource Mobilization
 Information Management
 Shelter Cluster Reports
 Maps
 Assessments
 REACH Assessment
 Technical Guidance

Typhoon Pablo 2012(Bopha)

Typhoon Bopha (PAGASA designation: Pablo) was a powerful late-season tropical cyclone which formed unusually close to the equator. Bopha made landfall over Mindanao late on December 3, an island devastated by Washi in December 2011, becoming the strongest tropical cyclone ever to hit Mindanao. Source: Wikipedia

Featured Documents

Strategy, Advocacy, and Situational Analysis	Information Management
Shelter Cluster Strategic Framework 121222 The strategic framework of the Typhoon Pablo Shelter Cluster for 22 Dec 2012 Shelter Cluster Advocacy Update 121219 A shelter cluster advocacy position shared with the Philippines Humanitarian/Resident Coordinator 19 Dec 2012 ToR - Municipal Shelter Cluster Focal Points 121230 Terms of Reference for Municipal Focal Point for the Shelter Cluster FINAL Philippines Typhoon Bopha-Pablo REACH Assessment Report Final report for REACH Detailed Shelter Assessment conducted December 2012	Shelter Cluster Agency Reporting Template v1.3 AGENCY REPORTING TEMPLATE ver 1.3 - a tool used to track the planned and completed interventions made by Shelter Cluster partners to affected communities Shelter Cluster Information Report 121220 Information report for 20 Dec 2012

Technical Guidance

Typhoon Pablo - Shelter Cluster Minimum Technical Standards 121213
 A table that describes the various technical standards for interventions advanced for in the Shelter Cluster initial strategy

Quick Facts

Event Date:
December 2012

Event Type:
Windstorm, Flood, Slide

Damage Location:
Rural, Peri-Urban, Urban

Degree of Displacement:
Medium

Status:
Active

Emergency Lead Agency:
IFRC/IOM

Recovery Lead Agency:

Coordination Contact

Cluster Coordination

Tom Bamforth (IFRC/Australian RC)
 email: Coord.Phil@ShelterCluster.org
 tel: +63 9186979073

Mayen Olmedo (IOM)
 email: eolmedo@iom.int
 tel: +63 908 882 0930

Technical Coordinator

Marta Peña (IFRC)
 email: Tech.Phil@ShelterCluster.org
 tel: +63 9999846267

Information Management

Phyo Kyaw (IFRC)
 email: IM.Phil@sheltercluster.org
 tel: +63 9999 84 6265

Assessment Coordination

Clay Westrope (Impact Initiatives)
 email: clay_westrope@impact-initiatives.org

Recent Documents

🔍	Type	Name	Document Description	Publishing Agency	Report Date	File Size
	SC	SC Agency Report - COMVAL 13 02 16	Shelter Cluster Agency overview report Compostela Valley 16 Feb 2013	Shelter Cluster	16/02/2013	132 KB
	SC	SC Agency Report - CARAGA 13 02 15	Shelter Cluster Agency overview report Caraga Region 15 Feb 2013	Shelter Cluster	15/02/2013	84 KB
	SC	SC Agency Report - Davao Oriental 13 02 14	Shelter Cluster Agency overview report Davao Oriental 14 Feb 2013	Shelter Cluster	14/02/2013	86 KB